



IPCameye Widget User Guide

A mobile security widget for Android phones

By:	Nano Equipment Pte Ltd (http://www.neseapl.com)
Release:	Version 2, October 2009



Table of Contents

1. INTRODUCTION.....	3
2. SUPPORTED IP CAMERAS	4
3. IPCAM WIDGET INSTALLATION	4
4. ADD AND REMOVE WIDGET	4
ADD WIDGET.....	4
REMOVE WIDGET	6
5. IPCAM WIDGET CONFIGURATION	6
6. USER INTERFACE	8
SWITCH IP CAMERA	8
SAVE SNAPSHOT IMAGE	9
VIEW IP CAMERA IN STREAMING MODE	9
7. HELP	10

1. Introduction

IPCam Widget is an Android home-screen widget that allows you to view up to four remote IP cameras on your Android phone. The widget grabs snapshots from your IP cameras and presents them on the home-screen of your phone. The snapshots are automatically updated at configurable interval, turning your phone into a 'digital photo frame' that displays images captured by your IP cameras.

You can choose to view all four cameras simultaneously in a quadrant display or toggle to view individual camera on full display. The widget let you save current snapshot by pressing the *Save button* (soft-key). The saved image can be retrieved from your phone's picture gallery.

You can also choose to view a camera in live video streaming mode by pressing the *Play button*. This launches the phone's media player and starts streaming from the IP camera.





2. Supported IP Cameras

Supported IP cameras include:

- All Vivotek IP cameras.
- All IP cameras that supports the following:
 - remote log in using HTTP Basic Authentication
 - snapshot capture via HTTP command
 - [Optional] 3GPP compliance RTSP live video streaming

3. *IPCam Widget* Installation

Download and install *IPCam Widget* following the instructions in your Android phone's user manual.

To start using *IPCam Widget*, your phone must be connected to the Internet via WiFi or mobile broadband connection. Your IP cameras must also be connected and accessible through the Internet.

Please consult your IP camera supplier if you are not sure how to configure your IP camera.

4. Add and Remove Widget

Add Widget

After successful completion of the installation, the next step is to add the *IPCam Widget* widget to your home-screen and configure it to connect to your IP cameras.

Please follow the steps below:

- a) Select an empty home page
- b) Click the "Menu" button of the phone to display home page toolbar (see Figure 1 and 2a)
- c) Press "Add" (see Figure 2b)
- d) Press "Widget" to list available widgets and select *IPCam Widget* (see Figure 2c and 2d)
- e) At this point, the *IPCam Widget* configuration page will open (see Figure 3a). Following the instructions on Section 5 below to configure *IPCam Widget*. If no camera is configured, *IPCam Widget* will show empty screens (Figure 3b)

f) Once done, press “Ok” to display the *IPCam Widget*



Figure 1: Click the Menu button to display home page toolbar



Figure 2a

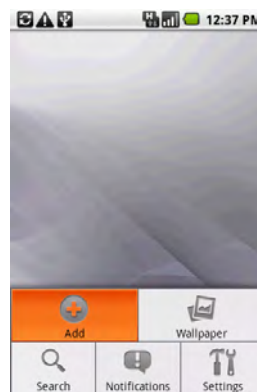


Figure 2b

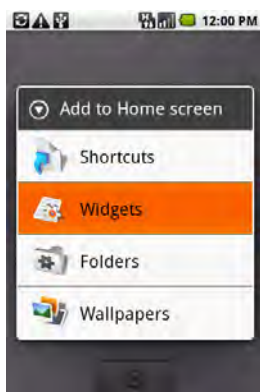


Figure 2c



Figure 2d



Figure 3a



Figure 3b

Remove Widget

The widget will stop updating the snapshots once it is removed from the home page. To remove the widget, follow the steps below:

- Go to the screen where *IPCam Widget* is displayed
- Press and hold on the widget until the recycle bin is displayed at the bottom of the screen (see Figure 4a)
- Drag the widget down towards the recycle bin
- When the color of the widget changes, release the press on the screen (see Figure 4b)
- The widget is successfully removed (see Figure 4c)

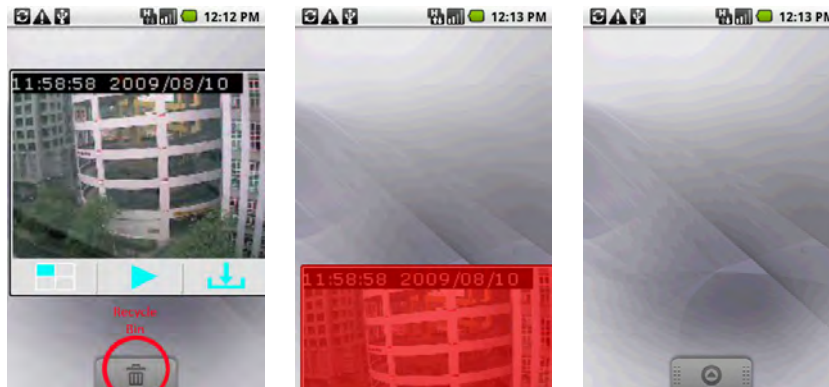


Figure 4a, 4b, 4c: Removing Widget

5. *IPCam Widget Configuration*

You can configure *IPCam Widget* when adding widget (see Section 4 above). Alternatively, the configuration page will open if you press-and-release the widget's main display window.

Follow the steps below to configure:

- a) The main configuration page lists options for four IP cameras. Click the tick box to the right of the IP camera you would like to add or configure (see Figure 5a)
- b) Fill up the form on page that appears. Scroll to see those fields at the bottom of the page (see Figure 5b and 5c):
 - a. **Host:** this refers to the hostname or IP address of the IP camera including the HTTP port
 - b. **Model:** select either the shortcuts (for Vivotek 7000 Series or Vivotek Other Models) or Custom Models for all other makes of IP cameras
 - c. **Relative URL:** this completes the full URL required to get a snapshot from the IP camera. This field is pre-configured for Vivotek models. For other IP cameras please refer to the IP camera user manual or vendor for information
 - d. **Username:** this is the username required to login to the camera
 - e. **Password:** this is the password required to login to the camera
 - f. **RTSP:** this is an optional field only required if you would also like to view streaming video from the camera. This is the full RTSP URL path for live streaming from the camera.
 - g. **Update:** this allows you to specify the interval between snapshot updates. The interval is specified in seconds. However, the actual update speed will depend on the processing power of your phone and IP cameras, as well as the network conditions.
- c) Press the OK button to return to the main configuration page (see Figure 5d)
- d) Repeat the process for other IP cameras that you would like to add or configure. When finished, press the OK button to go to the widget view.



Figure 5a

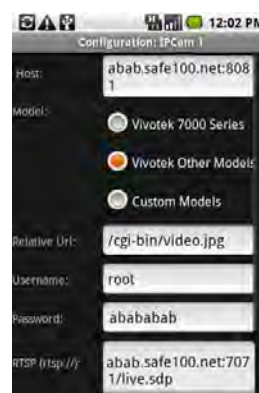


Figure 5b



Figure 5c








Figure 5d

6. User Interface

Switch IP Camera

At start up, the widget shows the quadrant display. To view an individual camera at full screen, press the *Switch Button* (see Figure 6a and 6b). The *Switch Button* allows you to toggle between five different display settings:

SETTING	SWITCH BUTTON
Quadrant Display (all cameras)	
Camera 1 full screen	
Camera 2 full screen	
Camera 3 full screen	
Camera 4 full screen	

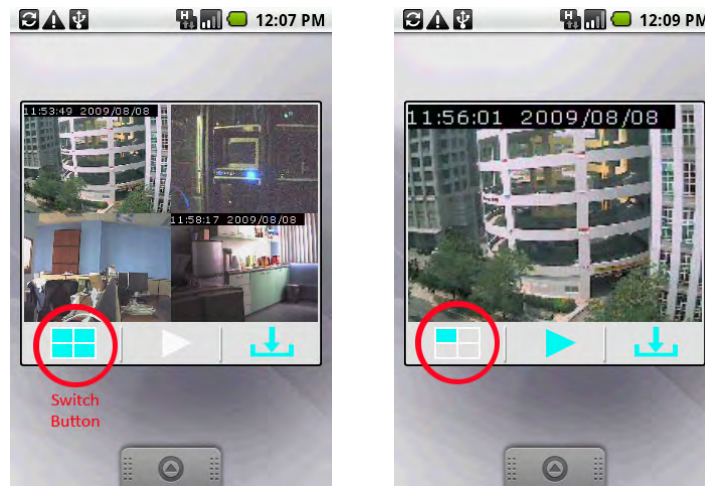


Figure 6a and 6b: Press the Switch Button to toggle the display

Save Snapshot Image

To save a copy of the current snapshot, press the *Save Button* (see Figure 7a). The image will be saved in PNG format in the phone's picture gallery (see Figure 7b).

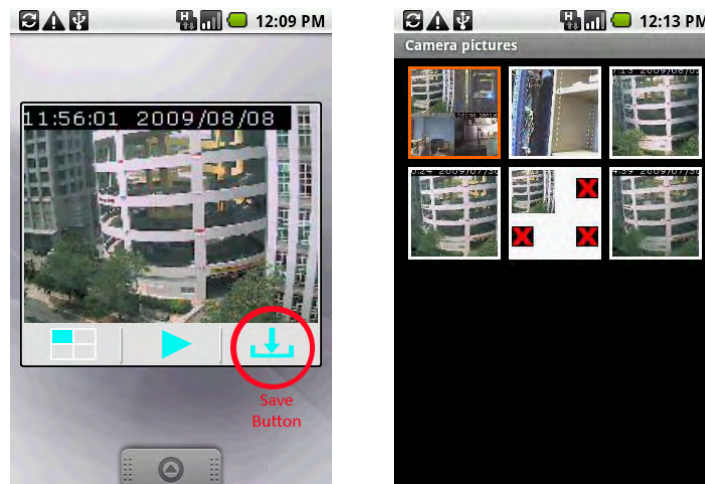




Figure 7a and 7b: Press the Save Button to save snapshot to picture gallery

View IP Camera in Streaming Mode

When the *Play Button* is enabled (in turquoise) it means you can view the current camera in video streaming mode. Pressing the *Play Button* will launch the default media player of the phone and start live video streaming from the camera (see Figure 8a and 8b).

SETTING	PLAY BUTTON
Play Button enabled	
Play Button disabled	

To stop the streaming mode and go back to the widget view, press the Return key of the phone (see Figure 9).

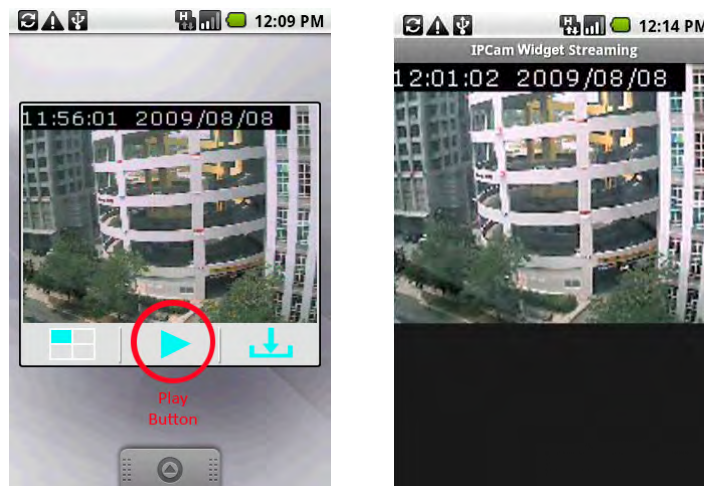


Figure 8a and 8b: Press the Play Button to start live video streaming



Figure 9: Press the phone's Return key to go back

7. Help

Information on software version and user feedback form can be accessed by pressing the Help Button at the configuration page.

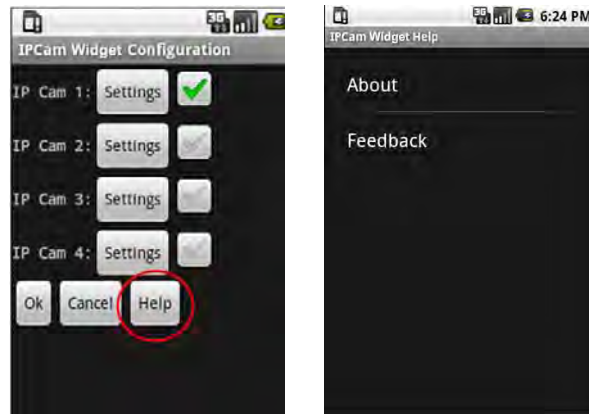


Figure 10a and 10b: About and User Feedback

Message posted from the online User Feedback Form will be sent to our customer support team. Please provide your name and email if you would like to receive a reply.



Figure 11: Online User Feedback Form

----- End of Document -----