

OB Alert User Guide

A location based utility for Android phones

By:	Nano Equipment Pte Ltd (http://www.neseapl.com)
Release:	Version 1.2, April 2010



Table of Contents

1. INTRODUCTION.....	3
2. <i>OB ALERT</i> INSTALLATION.....	4
3. CONFIGURE <i>OB ALERT</i>.....	4
MAIN MENU	4
CONFIGURE LOCAL SETTINGS	6
CONFIGURE REMOTE SETTINGS.....	7
ERROR NOTIFICATION	9
HELP.....	9
APPENDIX 1	11
APPENDIX 2	12

1. Introduction

OB Alert is an Android utility that detects the Android phone's current location and sends silent SMS and/or email alert to predefined recipients if the phone has moved beyond a pre-determined range from a reference point (out-of-bounds).

OB Alert can be configured to use settings stored on a Google Documents file. This allows the settings to be modified remotely.

OB Alert can be used for general tracking and remote monitoring purposes:

- Geo-fencing for people or movable assets.
- Care for children, elderly or disadvantaged.

The current location of the phone will be appended to the alert message automatically so that the recipient will also know whereabouts of the phone when the alert is received.



2. *OB Alert* Installation

Download and install *OB Alert* according to the instructions on your Android phone's user manual.

For more accurate location detection when outdoor, please enable the phone's GPS.

3. Configure *OB Alert*

Main Menu

After successful installation, you should see the *OB Alert* icon on your phone's list of applications (Figure 1).

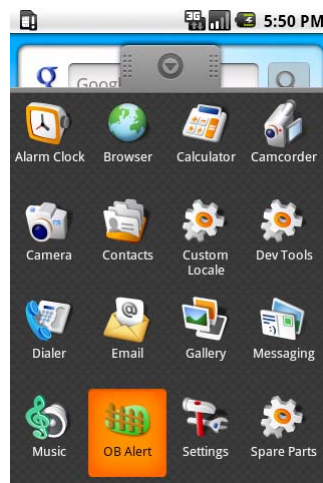


Figure 1: OB Alert installed

To configure, touch the application icon to open the main menu (Figure 2).

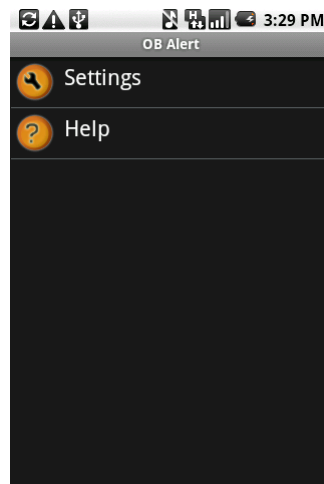


Figure 2: Main Menu

Select *Settings* and select to either use *Local Settings* or *Remote Settings*.

Tap on *Configure Local Settings* or *Configure Remote Settings* to configure the corresponding settings (Figure 3):

1. Configure local settings
 - This allows you to set up and maintain a set of configuration data for *OB Alert* locally.
2. Configure remote settings
 - This allows you to select a spreadsheet settings file on your Google Documents to be used as your remote settings for *OB Alert*.

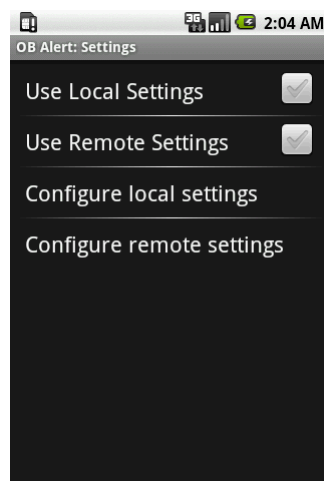


Figure 3: Settings Menu



Configure Local Settings

Provide the required data (Figure 4):

1. Latitude and longitude of the desired reference point. If you would like to use your current location as the reference point, simply press the 'Use current' button to obtain the longitude and latitude. Otherwise, you can enter a keyword of the desired location then press the 'Search Map' button to find and confirm the location. The name of the selected location is shown on the top of page.
2. OB (out-of-bounds) range. This is the distance from the reference point beyond which the OB alert will be triggered.
3. Repeat alert frequency. You can specify the interval between alerts if the phone continues to be in OB situation.
4. Enable or disable SMS and/or email alert.
5. Mobile number of the SMS alert recipient.
6. Email address of the email alert recipient.
7. Email subject of the email alert.
8. Message body of the SMS and email (common) alert. Note that the current location of the phone will be automatically appended to the message.
9. SMTP Server for sending the email alert (please check with your email service provider if you are not sure about SMTP related settings).
10. Email username.
11. Email account password.
12. Enable/disable authentication and choose SSL or TLS encryption according to the requirement of your SMTP server (leave it empty if no encryption).
13. SMTP Server port.
14. Turn on/off repeat alert.
15. If repeat alert is turned on, you can specify the maximum number of repeat alerts to be sent. This is useful to avoid incurring too much expense on SMS.
16. Save your settings.

17. You can press the phone's return key to leave the application running in the background.

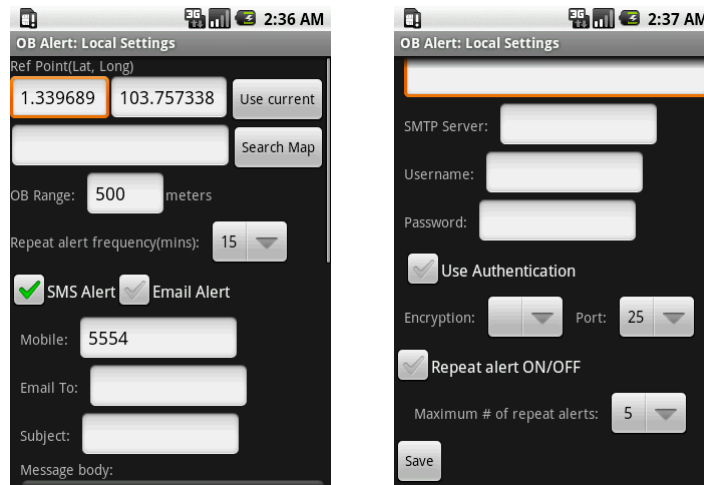


Figure 4: Local settings

Configure Remote Settings

Before you select this option, ensure that you have prepared a remote settings spreadsheet file on a Google Documents account that you have access to. The valid format of the file is described in Appendix 1.

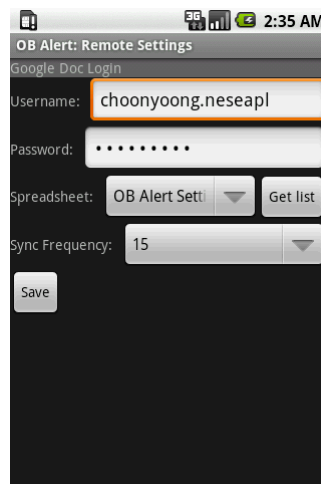


Figure 5: Remote settings

Enter the login information for the Google Account which allows you to access the remote settings spreadsheet file.

Press the 'Get list' button. The application will retrieve the list of available spreadsheet files. Select the file that contains the remote settings.

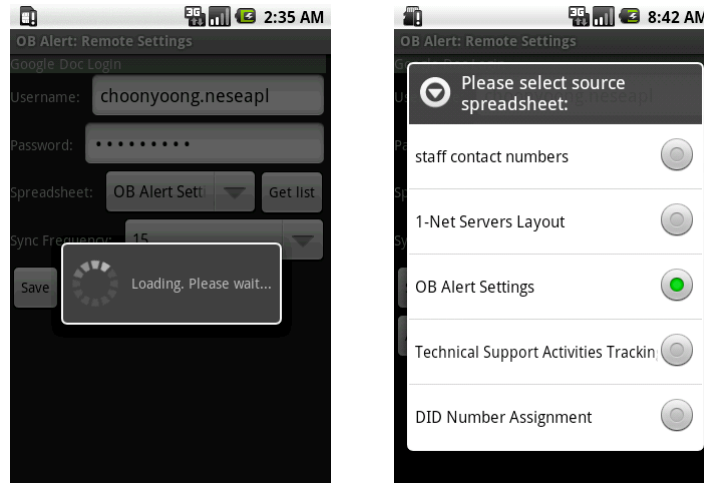


Figure 6: Select the remote settings spreadsheet file

After you have selected the file, select the 'Synch Frequency' value in minutes which is the time interval for *OB Alert* to synchronize its data with the remote settings file (Figure 7). If any parameter on the file is changed, *OB Alert* will be updated to using the new value.

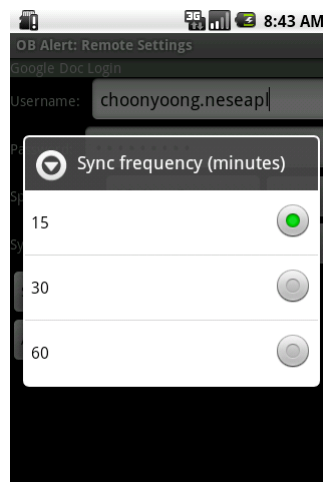


Figure 7: Set the Synch Frequency

Remember to save your settings. You can press the phone's return key to leave the application running in the background.



Note: if *OB Alert* is set up to use remote settings and when it fails to access to Google Documents, it will continue to use the data obtained during the last successful access. If there is no data exist, it will use any local settings defined.

Error Notification

When enabled, *OB Alert* runs in the background. If the service encounters any error, it will provide a visual alert on the notification bar as shown in Figure 8.

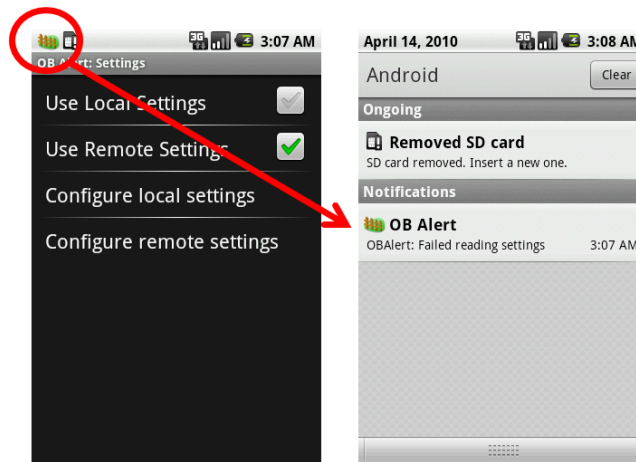


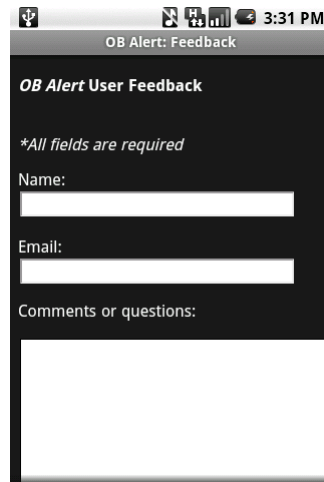
Figure 8: Error Notification Example

Help

The phone must be connected to the Internet via WiFi or mobile broadband connection if you chose Email Alert and/or Use Remote Settings.

Information on software version and online User Feedback Form can be accessed by selecting the *Help* option at the configuration page.

Message posted from the online User Feedback Form will be sent to our customer support team. Please provide your name and email if you would like to receive a reply (Figure 9).



The image shows a mobile application interface for an online user feedback form. At the top, there is a status bar with icons for signal strength, Wi-Fi, and battery, and the time 3:31 PM. Below the status bar, the title 'OB Alert: Feedback' is displayed. The form itself has a dark background with white text. It starts with the title 'OB Alert User Feedback', followed by a note '*All fields are required'. There are three input fields: 'Name:', 'Email:', and 'Comments or questions:'. The 'Name:' and 'Email:' fields are short text boxes, while the 'Comments or questions:' field is a larger text area. The form is presented in a vertical orientation.

Figure 9: Online User Feedback Form

The accuracy of the location data will depend on the GPS of your phone and / or WiFi and mobile network as well as information provided by Google Maps services.

Google Documents is a free service. For help on Google Documents, please visit this link:

<http://www.google.com/google-d-s/tour1.html>



Appendix 1

Format of Remote Settings File

The remote settings file should be a spreadsheet file on Google Documents with formats as shown in Table 1 below. The values in **RED** font can be changed according to your requirements.

Settings	Value
Reference Point Longitude	103.757286
Reference Point Latitude	1.339352
OB Range	1000
SMS Alert	OFF
Mobile number	91234567
Message	Message from OB Alert
Repeat Alert	OFF
Repeat Alert Frequency	2
Maximum Repeat	3
Email Alert	ON
Email To address	myaddress@gmail.com
Email Subject	Alert from Android phone
Email SMTP server	smtp.gmail.com
Email SMTP port	587
Email username	Username
Email password	Password
Email use authentication	ON
Email encryption	TLS

Table 1: Format of Remote Settings File

A sample CSV file can be downloaded [here](#).



Appendix 2

SMTP Server settings for common email services

These settings are for reference only and official settings provided by the respective email services shall be followed.

Gmail SMTP Server

Email SMTP server	smtp.gmail.com
Email SMTP port	587
Email use authentication	ON
Email encryption	TLS

Yahoo bizmail SMTP Server

Email SMTP server	smtp.bizmail.yahoo.com
Email SMTP port	25
Email use authentication	ON
Email encryption	

AOL SMTP Server

Email SMTP server	smtp.aol.com
Email SMTP port	587
Email use authentication	ON
Email encryption	TLS

----- End of Document -----