



***FLU* User Guide**

Facebook Location Updater for Android phones

By:	Nano Equipment Pte Ltd (http://www.neseapl.com)
Release:	Version 1.5.2, January 2011



Table of Contents

1. INTRODUCTION.....	3
2. <i>FLU</i> INSTALLATION.....	3
3. CONFIGURE & USE.....	3
LOGIN TO FACEBOOK	3
POST UPDATE TO FACEBOOK.....	4
SETTINGS.....	5
HELP.....	6



1. Introduction

FLU is an Android utility that let the user posts Facebook update with current geo-location information automatically attached to the post.

FLU provides a convenient way for anyone to inform their Facebook friends his/her whereabouts without having to type out the location details.

The geo-location information include:

- Location name
- URL to Google Maps

Other features supported include:

- Auto-update at user-configurable intervals. This automates the update process such that when the user is on the move, the user's Facebook friends could continue to track his/her latest location.
- Attach photo to the update by selecting from album or taking new photo with the phone's camera.

2. *FLU* Installation

Download and install *FLU* according to the instructions in your Android phone's user manual.

To start using *FLU*, your phone must be connected to the Internet via WiFi or mobile broadband connection. You must also have a valid Facebook account.

For more accurate location detection when you are outdoor, please enable your phone's GPS.

3. Configure & Use

Login to Facebook

When the application is launched for the first time, you will be asked to login to your Facebook account. You must provide the necessary permission (Figure 1).

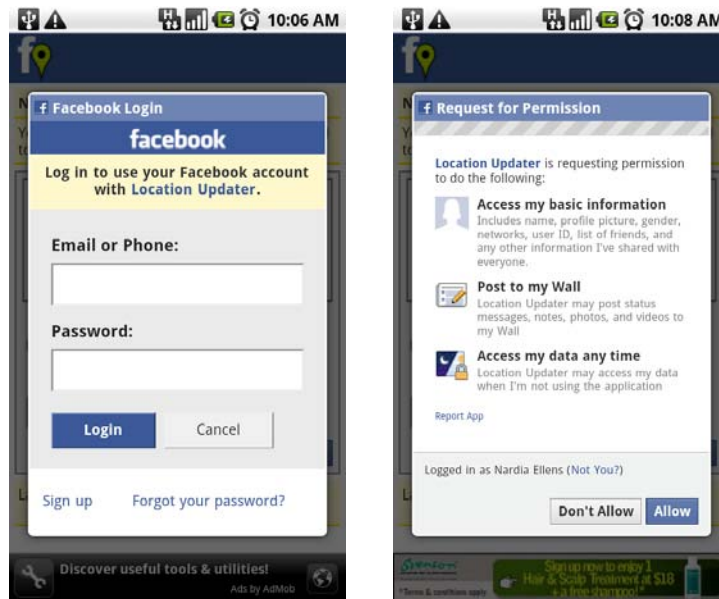


Figure 1: Login to Facebook & Grant Permission

Post Update to Facebook

You can now compose and share update on Facebook. You can also choose to attach a photo by selecting from the phone's gallery/album or taking a new photo.

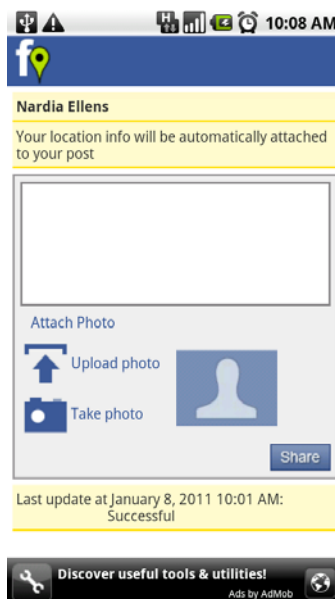


Figure 2: Update Page

The following geo-location information will be automatically appeared with your post on Facebook:

- The name of your current location
- A URL link to Google Maps

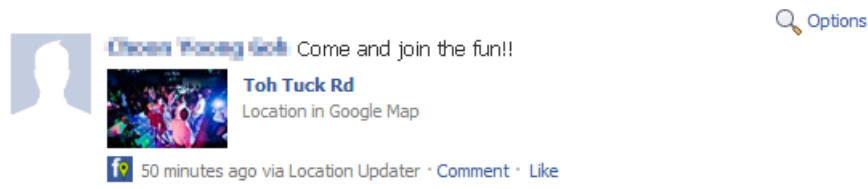


Figure 3: How it looks on Facebook

Settings

You can access the Settings page by selecting the menu option (Figure 4).

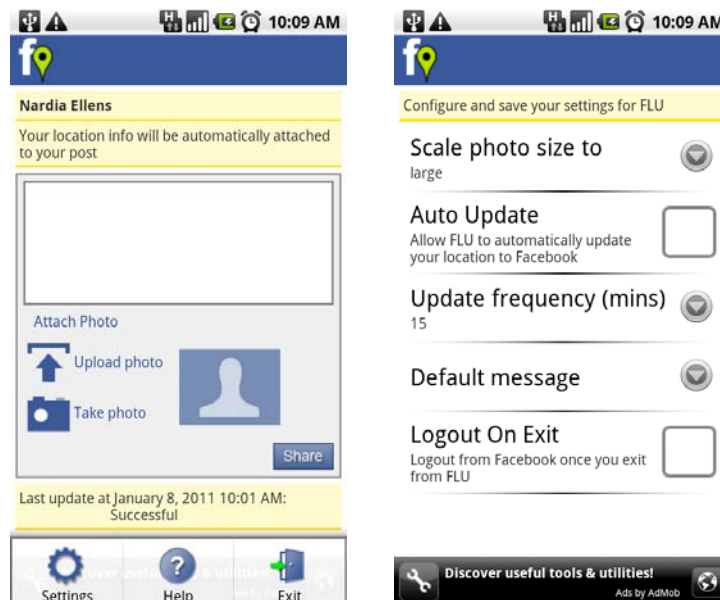


Figure 4: Settings Page

The settings include:

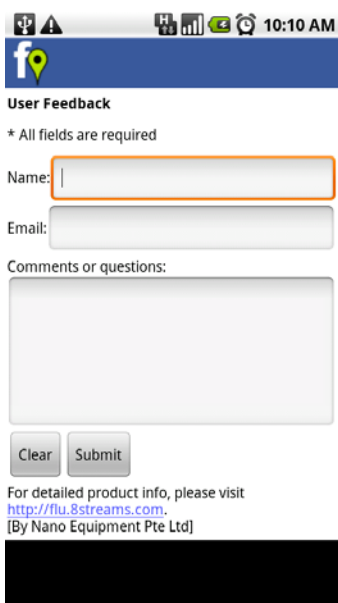
- Logout on Exit – if you enable this option, every time you close the application you will be logged out of Facebook. You will need to re-login when you return. Auto-update will not work if this option is enabled.

- Auto Update – if you enable this option, *FLU* will automatically update your Facebook with the default message at the update frequency you selected.
- Scale photo size – if your phone has limited RAM memory, please select small.

Help

Information on software version and online User Feedback Form can be accessed by selecting the *Help* menu option.

Message posted from the online User Feedback Form will be sent to our customer support team. Please provide your name and email if you would like to receive a reply (Figure 6).



The screenshot shows a mobile interface for a 'User Feedback' form. At the top, there's a status bar with icons for signal, battery, and time (10:10 AM). Below that is a blue header with a white 'f' logo and a location pin icon. The form title is 'User Feedback' in bold. A note says '* All fields are required'. There are three input fields: 'Name:' with a white box and an orange border, 'Email:' with a white box, and 'Comments or questions:' with a larger white text area. Below the text area are two buttons: 'Clear' and 'Submit'. At the bottom, there's a link: 'For detailed product info, please visit <http://flu.8streams.com>. [By Nano Equipment Pte Ltd]'. A black rectangular area is visible at the very bottom of the screenshot.

Figure 6: Online User Feedback Form

Please note that the accuracy of the location data will depend on the GPS of your phone and / or WiFi and mobile network as well as information provided by Google services.

----- End of Document -----